



Korea Intellectual Property Center, 131 Teheran-ro, Gangnam-gu, Seoul, KOREA
Tel. 82.2.3459.2800

www.kipa.org

INTELLECTUAL PROPERTY NO.1 PARTNER

Korea Invention
Promotion Association



02	INTRO
04	VISION & MISSION
05	HISTORY
06	MAIN BUSINESS

IP BUSINESS

10	Intellectual Property Finance
13	Intellectual Property Transactions
14	Intellectual Property Creation

IP TALENT TRAINING

19	Invention Education for Primary and Secondary Students
19	Youth Invention Contest
20	Training Intellectual Property Personnel
21	Online Intellectual Property Education

IP CULTURE DEVELOPMENT

24	Developing Invention Culture at Home and Abroad
26	Global Expansion of Korean Intellectual Property and Culture

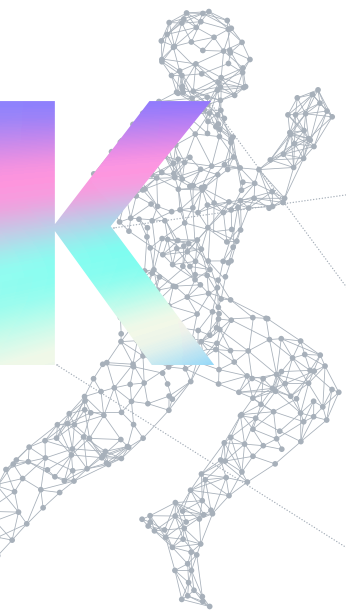


INTELLECTUAL
PROPERTY
NO.1 PARTNER

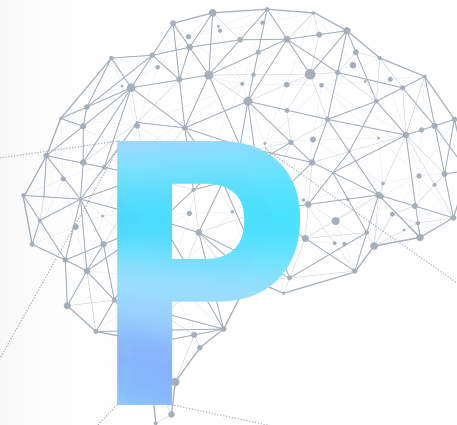
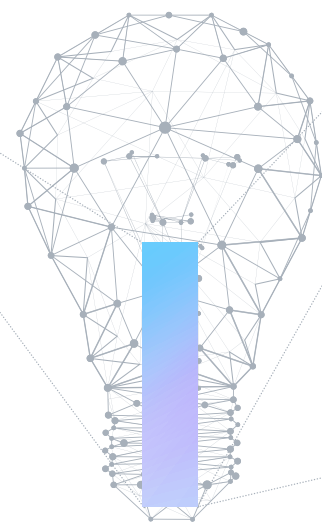
Korea Invention
Promotion Association

KIPA



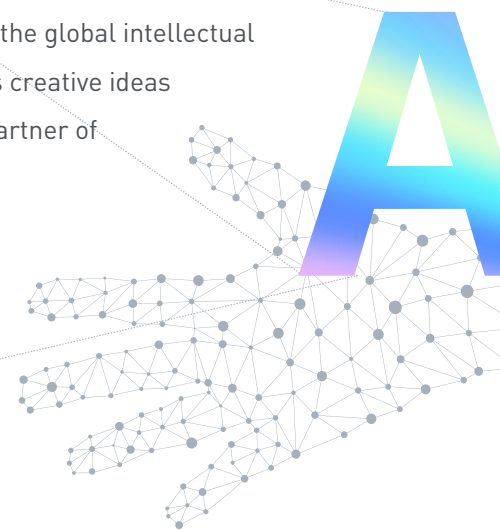


INTELLECTUAL PROPERTY NO.1 PARTNER

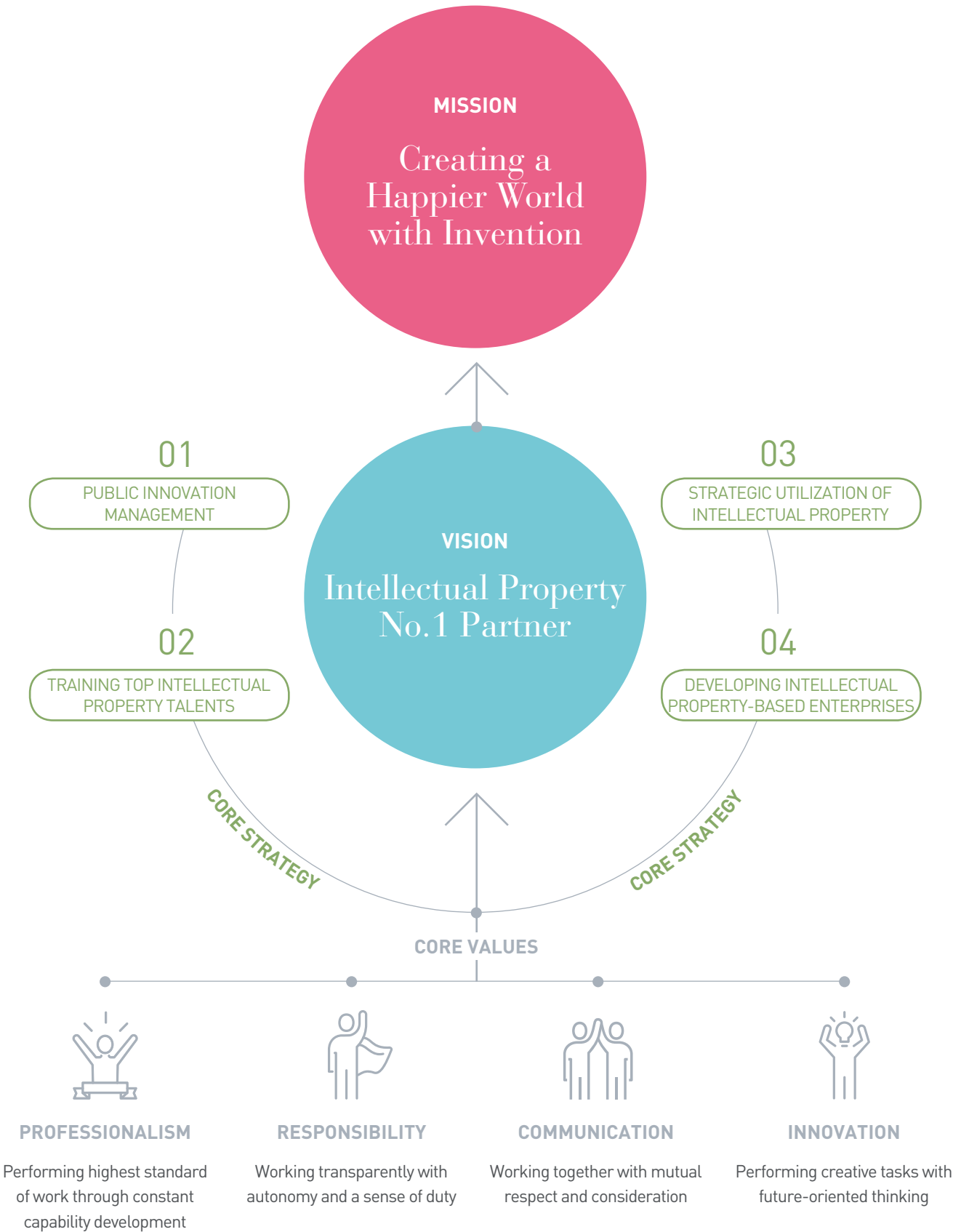


KIPA : Creating a new future with intellectual property

In an era when everything you imagine can become a reality, invention and innovation are the keys to our future and national competitiveness. We will lead the global intellectual property culture by cultivating people's creative ideas and imaginations as the number one partner of intellectual property.



VISION & MISSION



HISTORY

The Korea Invention Promotion Association (KIPA) has boosted the value and competitiveness of Korea's intellectual property for the last 40 years as the nation's first and leading institution of its kind. It was established in 1973 in accordance with Article 52 of the Invention Promotion Act and serves as a public institution.



IPAT certificate



Inauguration ceremony of IP recovery service agency

Designated as a public institution (Ministry of Strategy and Finance)

Designated as a remote education training center for innovative small and medium-sized enterprises (Ministry of Education)

Opened the Korea Intellectual Property Service Center (KIPS) (28 floors)

Designated as a technology transaction agency (Ministry of Trade, Industry and Energy)

Designated as a technology evaluation agency (Ministry of Trade, Industry and Energy)



Korea Intellectual Property Service Center



Signboard-hanging ceremony of the Korea Invention Promotion Association

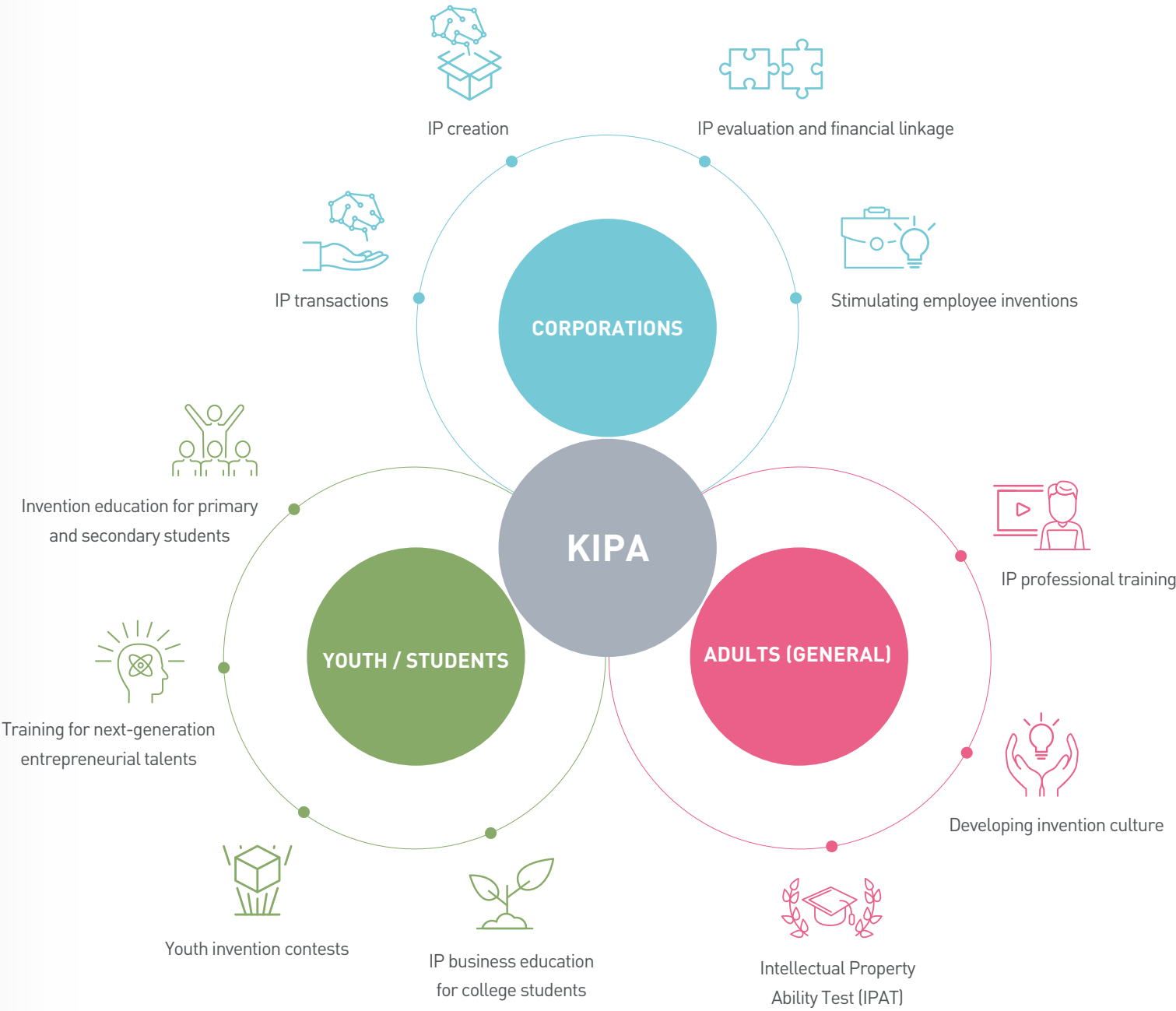
Founded as the Korea Patent Association



MAIN BUSINESS



MAIN BUSINESS



INTELLECTUAL
PROPERTY
NO.1 PARTNER

Korea Invention
Promotion Association



IP
BUSINESS



Creating
the future of
corporations
with intellectual
property



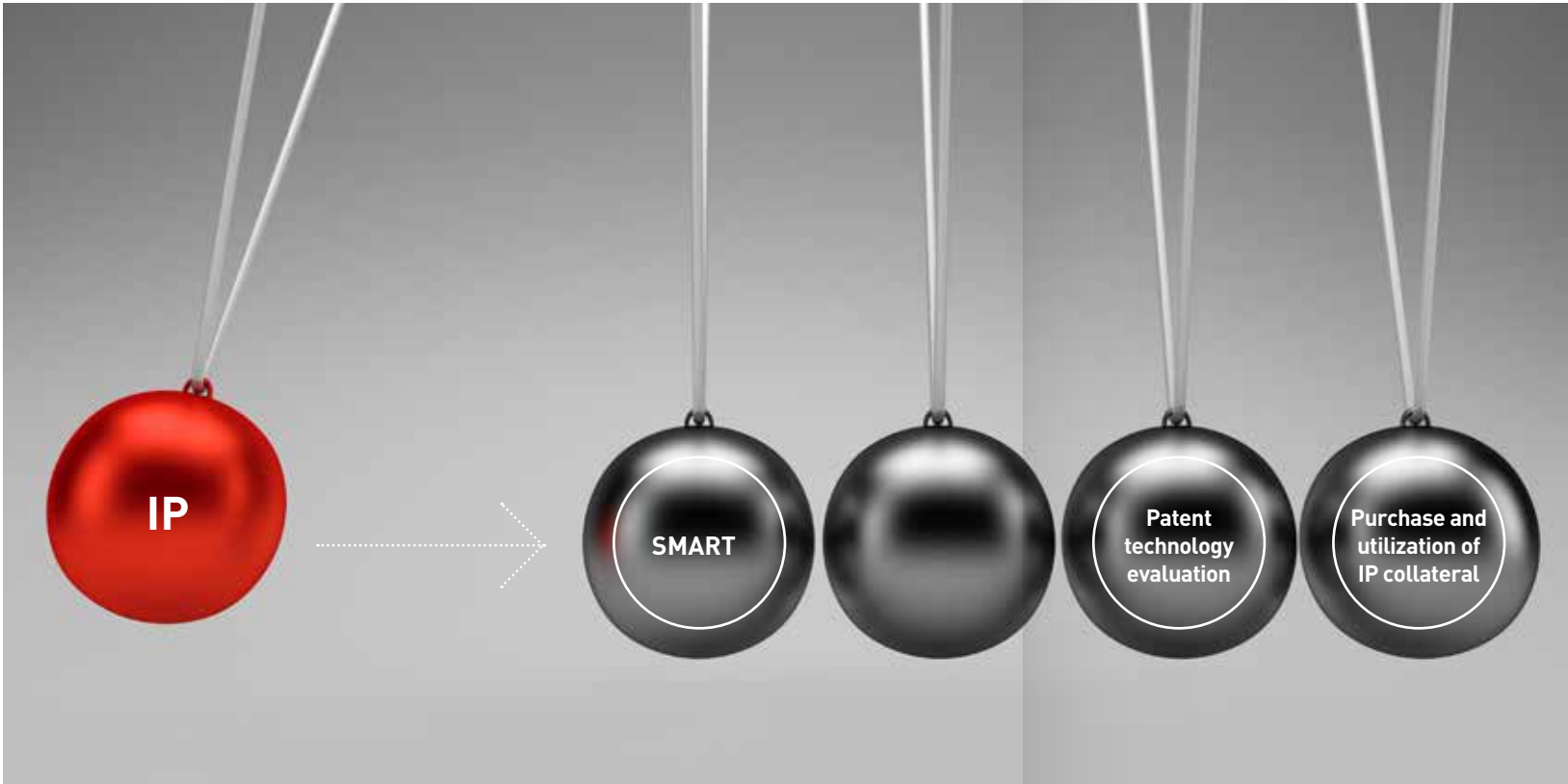
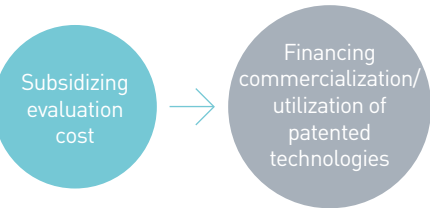
Intellectual property is a key asset for determining the sustainable growth and competitiveness of corporations.

Creative ideas of businesses must be recognized as an important asset through proper evaluation and should be actively traded in the market.

The Korea Invention Promotion Association will help stimulate the economy by building a healthy IP business ecosystem through a virtuous cycle of intellectual property.

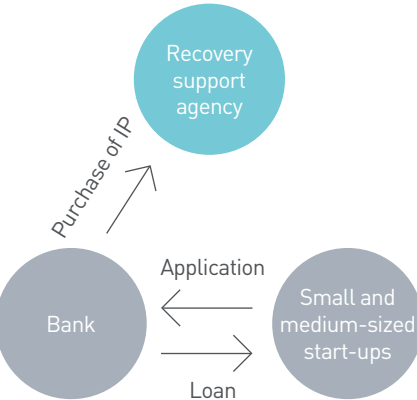
Patent Technology
Evaluation Support

We subsidize the cost of commercialization-related valuation, performance analysis, and business feasibility, along with valuation for financial linkage such as guarantees, collateral loans, and investments using registered patents. Those funds can be utilized in IP finance, technology transactions, in-kind investments, technology certifications and more, financing commercialization for small businesses and stimulating the utilization of patented technologies.



Purchase and Utilization of
IP collateral

If a company defaults on an IP collateral loan, we purchase the bad IP collateral through a recovery support agency, which is funded by the government and financial institutions. Also, we stimulate the transaction of IP collateral loans by reducing the risk of financial institutions through monetization of purchased IP.



System to Measure,
Analyze and Rate Patent
Technology (SMART)

SMART provides online patent analysis and evaluation results of registered patents in Korea, the US, and Europe in real-time at low cost through an evaluation model built on objective and quantitative patent data.

SMART is used for intellectual property finance and transactions as well as for various other purposes, such as performance measurement of national R&D and corporate patent management tools.



smart.kipa.org

About the Korea Intellectual Property
Evaluation Center

The Korea Intellectual Property Evaluation Center of the Korea Invention Promotion

Association is a government-certified technology evaluation agency established in line with Article 35 of the Technology Transfer and Commercialization Promotion Act and Article 28 of the Invention Promotion Act.



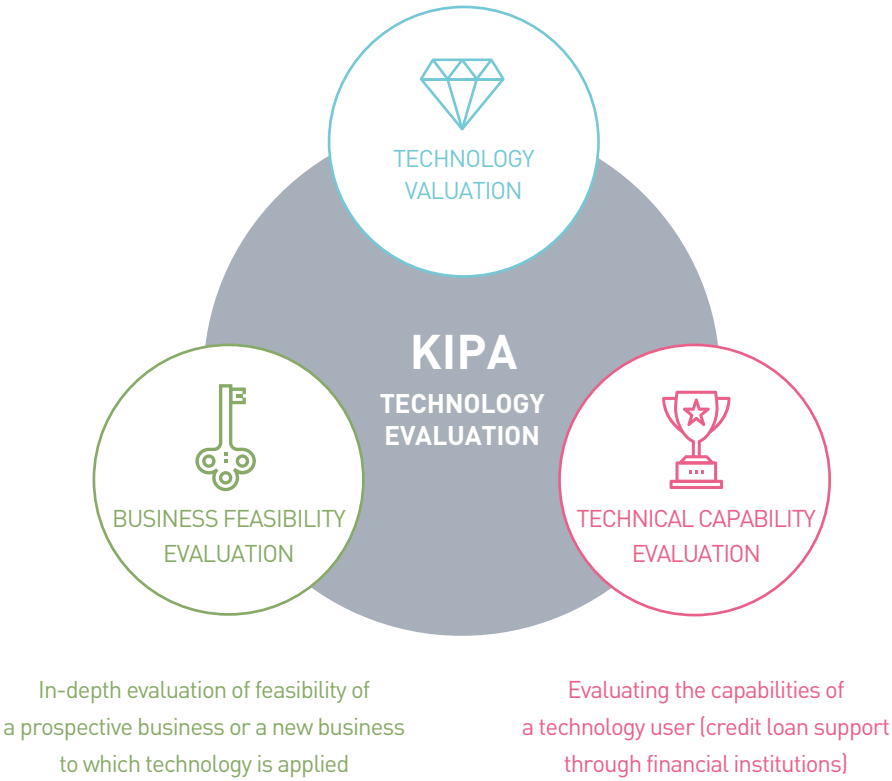
Technology Evaluation

The Intellectual Property Evaluation Center is the nation's highest-level technology valuation agency and has its own professional workforce that includes engineers, patent attorneys and accountants in various fields. Also, it has more than 400 highly experienced and knowledgeable external experts from universities, research institutes and related industries. These internal and external experts carry out technology valuations for various purposes, including in-kind

investments, technology transactions (transfers), securing investments, patent infringement lawsuits, and claiming damages in cases related to technologies owned by corporations and individuals.

The Intellectual Property Evaluation Center continues to increase its expertise by developing a number of intellectual property valuation models and technology valuation methodologies specializing in medicine biotechnology, agriculture and fisheries, and marine fisheries.

Evaluating the value of technology in monetary terms for technology transfers/ transactions, in-kind investments, technology investments etc.



INTELLECTUAL PROPERTY TRANSACTIONS



Revitalizing the Intellectual Property Market

The Intellectual Property Exchange of the Korea Invention Promotion Association helps stimulate intellectual property transactions through the distribution of unused IP by connecting supply and demand and helps establish a healthy intellectual property ecosystem.

Patent Transaction Specialists

The Intellectual Property Exchange provides support for the entire process of intellectual property transactions ranging from consultations and technology matching to mediation and negotiations and contract signings through some of the leading and most experienced experts in the country, including engineers, technicians, and patent attorneys.

National Patent Transaction Support

Provides demand-specific national patent technology matching and IP transaction

consulting for individuals and companies who are interested in commercializing patented technologies invented by government employees while on duty.

IP-Market (www.ipmarket.or.kr)

Online intellectual property trading platform that provides a technology database (supply/demand) and online consultation feature that can be utilized in the private and public sectors by individuals, small and medium-sized enterprises and universities who are interested in intellectual property transactions.

INTELLECTUAL PROPERTY CREATION

03



Intellectual Property Utilization Strategies

The Korea Invention Promotion Association provides customized solutions for corporations to successfully develop and launch their products from the IP standpoint to strengthen corporate competitiveness. We help small and medium-sized enterprises with IP product innovation by providing technical problem solutions and developing product designs by adding enhanced functions.

Patent Product Innovation Task

Provides product planning solutions by discovering core values of customers or solutions to technical difficulties of products (including devices and processes) by utilizing the problem-solving principles of patents in other fields.



Design Product Innovation Tasks

Creates benchmarking patents for enhancing product functions by utilizing patent search methodologies and provides product designs and mock-ups based on the patents.



Locally Tailored Intellectual Property Creation

The Korea Invention Promotion Association provides consulting and other services for intellectual property creation and supports regional IP powerhouses through intellectual property centers in Seoul and other regions.

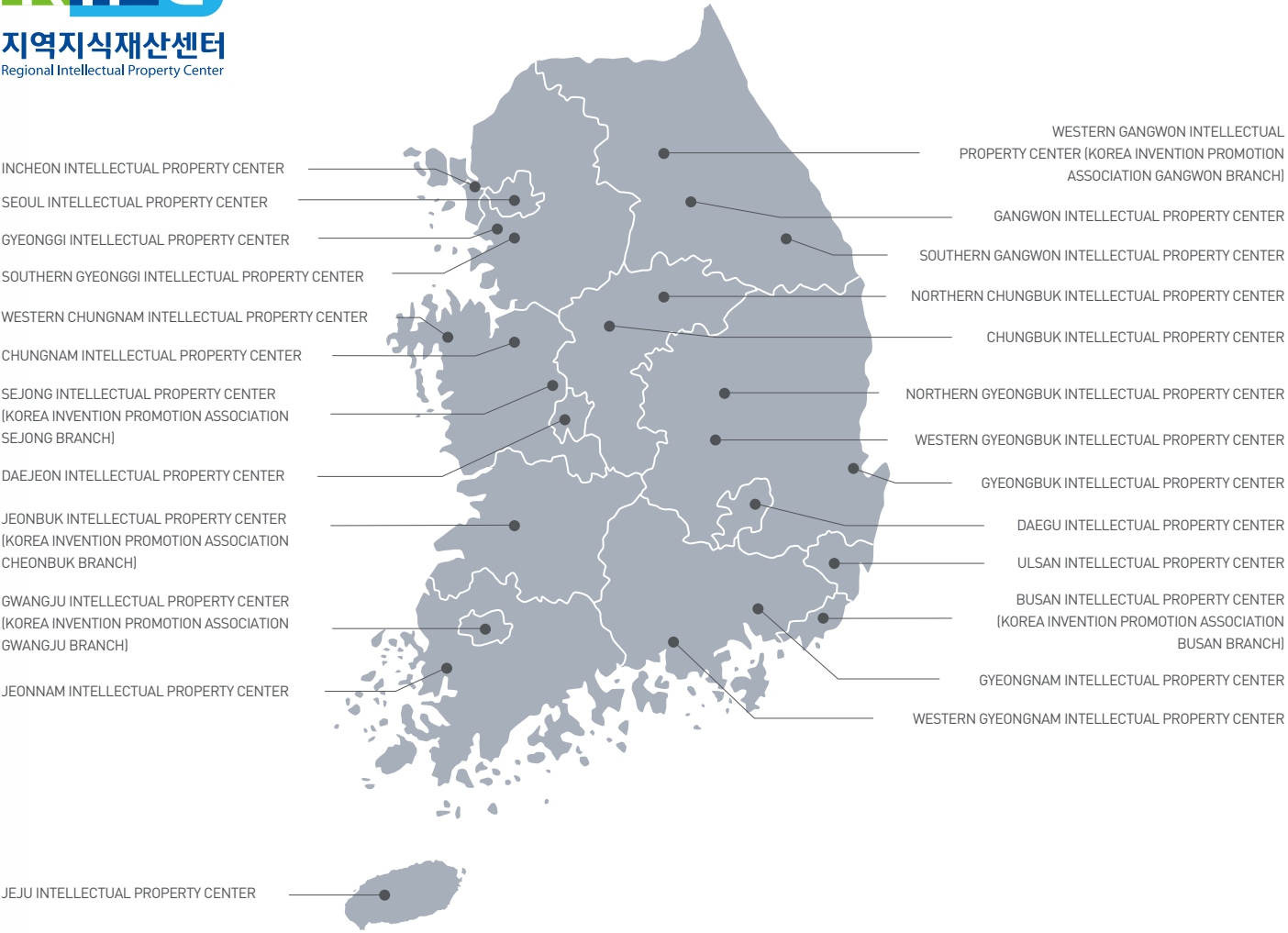


Operation of Regional Intellectual Property Centers

KIPA promotes the creation and utilization of intellectual property through regional intellectual property centers nationwide. These centers strengthen the competitiveness of small and medium-sized enterprises (SMEs) and revitalize the local economy, and provide comprehensive one-stop intellectual property services for SMEs, individual inventors and students through professional consultants.

Global IP Star Enterprise Development

Selected companies are offered a range of services for 3 years, including: overseas intellectual property applications; intermediate case registration; promotional videos for patented technologies; customized patent and design maps; non-English brand development; patent and design convergence; and global IP management diagnoses.



INTELLECTUAL
PROPERTY
NO.1 PARTNER

Korea Invention
Promotion Association



IP
TALENT
TRAINING



Leading
the world
by training
creative
convergence
talents

Human resources are the driving force behind the creation of intellectual property and are the key to future growth.

As a leading intellectual property education institution, the Korea Invention Promotion Association has been producing creative convergence talents who will lead in Korea and beyond.

We are committed to making this world a happier place through invention by making the following efforts: providing specialized lifecycle-based intellectual property education; supporting youth inventors; and training next-generation entrepreneurial talents and intellectual property professionals.

INVENTION EDUCATION FOR PRIMARY AND SECONDARY STUDENTS

Operation of Invention Education Centers Nationwide

At more than 200 invention education centers in elementary, middle, and high schools nationwide, we provide various educational programs to those interested in invention and offer balanced education throughout the country.

Training Creative Invention Talents

We train young people with creative invention skills through youth intellectual property development programs and inventor programs.

Operation of High Schools Specialized in Invention and Patent Education

IP Meister Program

This program cultivates future technical experts by providing students at IP Meister and specialized high schools with invention skills required in various industries through intellectual property development education and by harnessing creativity.

Young Inventors Program (YIP)

This program trains future intellectual property professionals and inventors through advanced invention and patent education and consultations for young learners with outstanding invention skills or those interested in invention, including: domestic or international invention contest winners; patent or registered invention item holders; those who have completed intermediate/advanced courses at invention education

centers; those who have completed an education program at the Center for Creative Entrepreneurs.

Training Next-Generation Entrepreneurial Talents

We are offering continuous, systematic training programs for students with the potential to grow into creative entrepreneurs who can harness the power of intellectual property, such as Bill Gates (Microsoft), Sergey Brin and Larry Page (Google).



YOUTH INVENTION CONTEST

Korea's Largest Youth Invention Festival

The Youth Invention Festival promotes invention awareness among young students and is the largest of its kind in Korea. The festival expands invention education across the board by simultaneously hosting the Korea Student Invention Exhibition, the Korean Student Creativity Championship, and the Youth Inventor Program.



Korea Student Invention Exhibition

This contest aims to cultivate the creativity of students, raise their awareness of invention, and develop them into future inventors by exhibiting outstanding student inventions and offering prizes, including the Presidential Award, along with special benefits to outstanding students.

Korean Student Creativity Championship

This contest aims to unearth potential inventors with outstanding creativity and ideas, and help young people develop their creative and tenacious spirit as they solve tasks in a team.

TRAINING INTELLECTUAL PROPERTY PERSONNEL

Professional Training Program

Through various educational programs, the Korea Invention Promotion Association takes a leading role in the intellectual property field by training intellectual property talents and supplying outstanding personnel to universities and companies.

IPAT (Intellectual Property Ability Test)

The nation's only intellectual property competency test is conducted by the Korea Invention Promotion Association. It is open to anyone who is interested in intellectual property and evaluates basic, practical skills in all areas of intellectual property.

Offline Intellectual Property Education (IP Campus)

We provide practical training for patent officers, technology developers, and researchers of domestic companies and research institutes, as well as non-professionals in all areas such as patent, trademark, design, and copyrights and operate invention science classes for young students.



Intellectual Property Education at Leading Universities | We train intellectual property professionals through independent intellectual property education programs in universities.

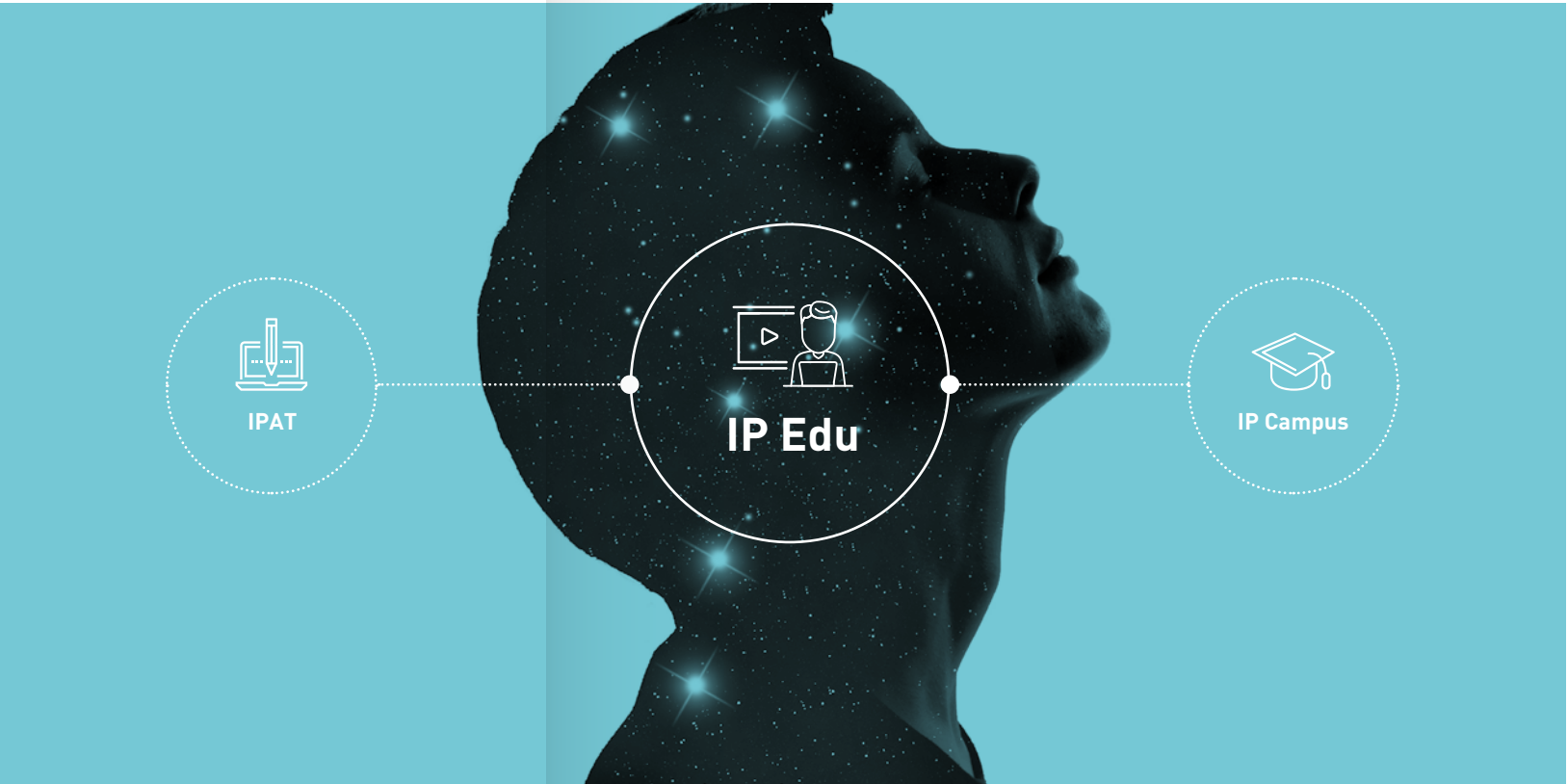
Intellectual Property Courses in Colleges and Graduate Schools | We offer professional instructors, standardized curricula and textbooks to expand university-level intellectual property education.

Campus Patent Universiade Competition | This industry-academia cooperation program trains in-demand intellectual property talents and supplies creative ideas of colleges to relevant industries.

CURRICULUM	TARGET	MAJOR CONTENTS
General Education (B2C)	Individuals	Systematic, specialized practical training for future intellectual property professionals that covers the overall intellectual property system, management practices, information search, infringement lawsuits, foreign patent laws, etc.
Commissioned Education (B2B)	Companies/Institutions/Groups	Customized education based on planning and analysis of educational needs of domestic companies, institutions, and universities
Invention Education (B2C)	Young Students	Self-developed invention education program for elementary students (3rd-6th grades) aimed at training creative convergence talents of the future by enhancing their creative, scientific thinking and raising invention awareness (basic → intermediate → advanced)

03

ONLINE INTELLECTUAL PROPERTY EDUCATION



Non-Pro

Education for anyone interested in intellectual property
Target | Anyone seeking online intellectual property education (college students, company employees, etc.) **Curriculum** | Protecting My Own Intellectual Property, Prior Skills Search Know-how, Do's and Don'ts of Employee Invention, etc.

Companies & Univ.

Online intellectual property education for groups, specifically employees of companies and research institutes, college students, and graduate students
Target | Companies, research institutes, organizations, associations, public institutions, and universities seeking group education **Curriculum** | Group B2B education including technology innovation utilizing TRIZ, IP flipped learning (on/offline) for corporations

Teachers

Remote educational training for teachers to boost their invention education capabilities
Target | Elementary and secondary school teachers and public educational officials nationwide **Curriculum** | Remote job training for 15 hours (1 credit) and 30 hours (2 credits)

Youth

E-learning group invention education for elementary and secondary school students aimed at training invention talents of the future
Target | Elementary/ middle/ high schools and invention education centers nationwide seeking online education on intellectual property **Curriculum** | World-Changing Inventions, Creativity Sparkles, Science TikTok, etc.

04

IP Academy

IP Academy (www.ipacademy.net), a national intellectual property education platform, offers various contents and online education for free, raising awareness of the importance of intellectual property and providing life-long intellectual property education to all citizens.



www.ipacademy.net

Intellectual Property Credit Bank System (cb.academy.net)

A distance learning-based degree program in intellectual property, which is aimed at training intellectual property professionals and offering life-long education with theories and practical education in intellectual property studies.

Target | Non-professionals and college students (universities with credit exchange agreement) **Curriculum** | 17 major courses including Introduction to Intellectual Property and Patent Law

INTELLECTUAL
PROPERTY
NO.1 PARTNER

Korea Invention
Promotion Association



IP
CULTURE
DEVELOPMENT



Tapping into
the global
market with
value and
a culture of
invention

The Korea Invention Promotion Association has been a leader in expanding a positive intellectual property culture to encourage citizens to engage in invention activities, to raise awareness of the importance of intellectual property, and to boost the value of intellectual property.

Furthermore, as a global intellectual property institution, the KIPA has been taking the lead in developing and sharing the intellectual property contents of Korea in order to strengthen its export base and to ensure the innovation and growth of the national economy by developing an international invention culture to stimulate the global market.

DEVELOPING INVENTION CULTURE AT HOME AND ABROAD

01



Developing Intellectual Property Culture at Home and Abroad

Through exhibitions and events, we help promote and commercialize outstanding inventions.

Invention Day Ceremony | We award outstanding inventors with the Order of Industrial Service Merit, Prime Minister's Award, and President's Award.

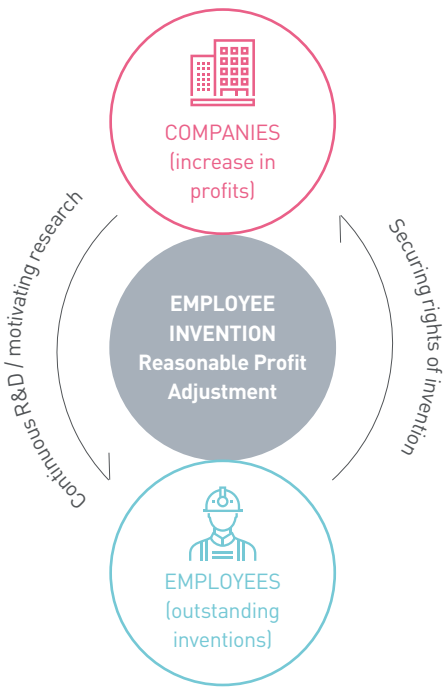
Korea Intellectual Property Exhibition | Outstanding domestic and overseas intellectual property-related products are displayed at the exhibition, including those protected by patents, designs, and trademarks.

Stimulating Employee Inventions

KIPA encourages companies to introduce the employee invention system by providing firms with professional consultations and certifications if they offer compensation for employee inventions and support the voluntary compensation culture.

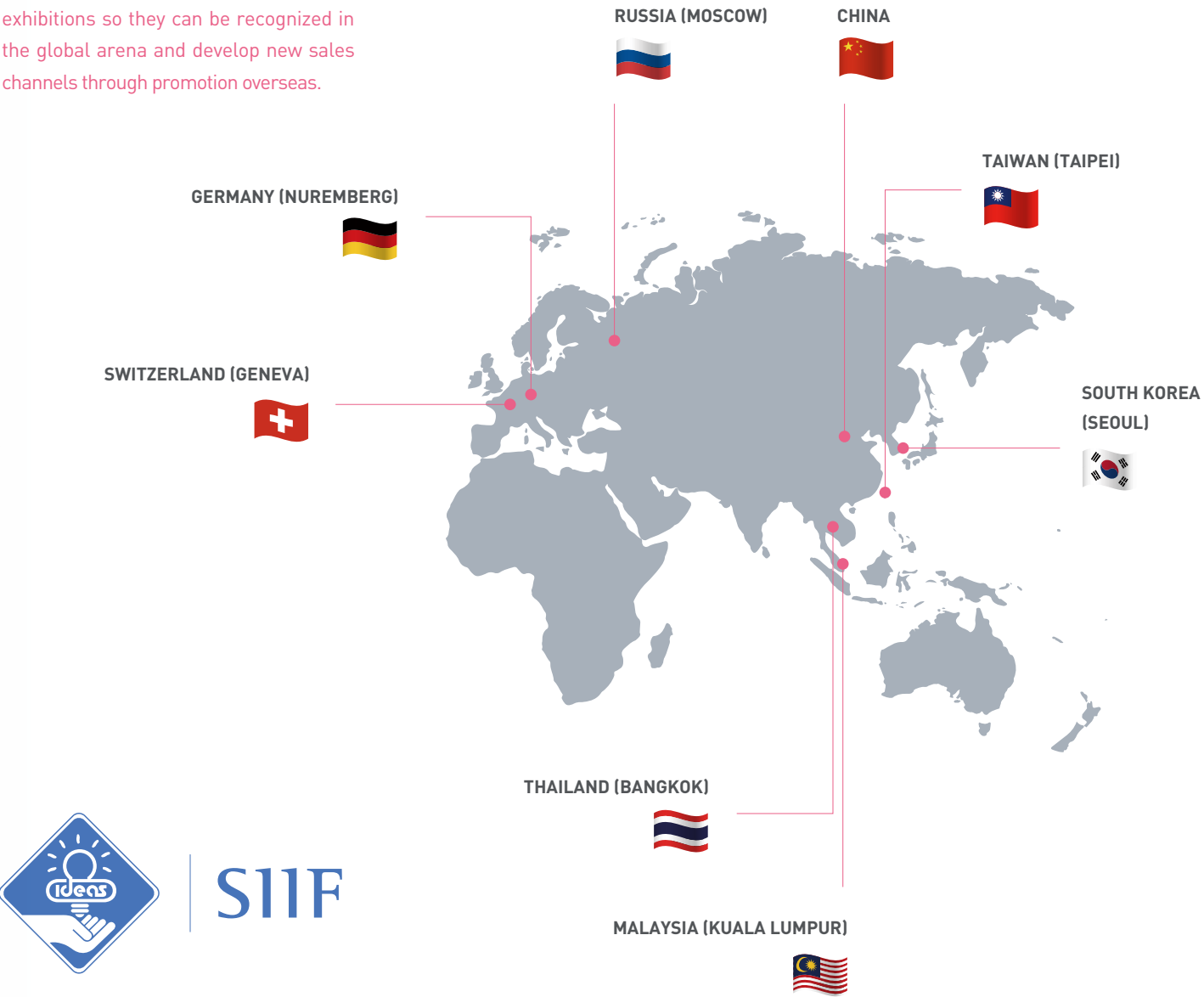
Employee Invention System

The system allows companies to acquire new technologies and increase profits as they are entitled to inventions created by their employees in return for sufficiently compensating staff for their work.



Participated in International Invention Exhibitions

Since 1982, we have sponsored outstanding entrepreneurs and individual inventors to participate in international invention exhibitions so they can be recognized in the global arena and develop new sales channels through promotion overseas.



GLOBAL EXPANSION OF KOREAN INTELLECTUAL PROPERTY AND CULTURE



Global Intellectual Property Content Development and Distribution

We develop and distribute global intellectual property contents and contribute to the appropriate technology development of the least developed and developing countries to improve their citizens' quality of life.

Korean Intellectual Property Wave and Culture

We aim to raise awareness of intellectual property rights around the world, contribute to strengthening corporate competitiveness and spread Korean intellectual property and culture through IP Panorama and other global intellectual property contents.

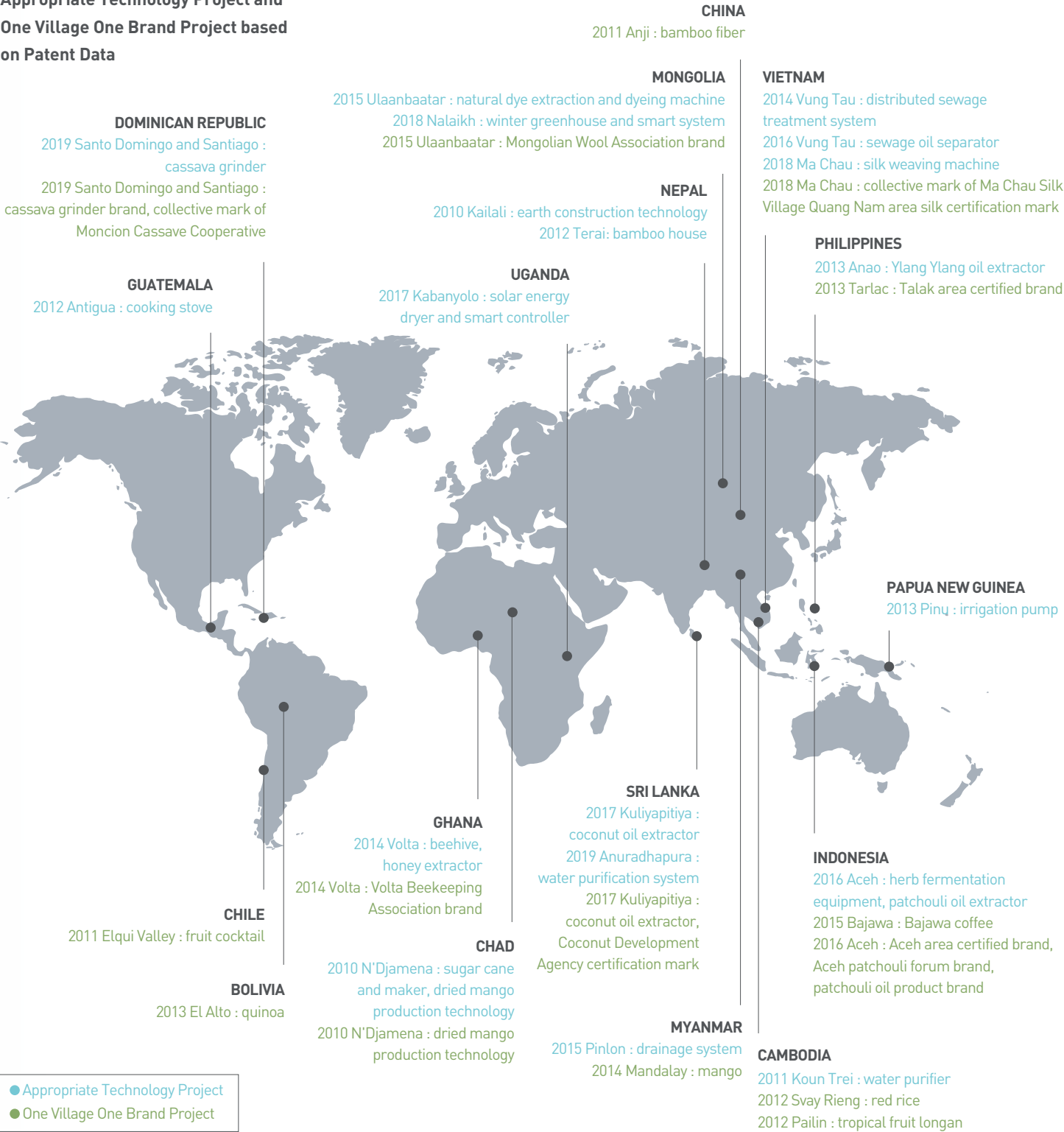
Global Intellectual Property Contents

IP Panorama / IP Ignite / IP Xpedite / IP Insight / G-Learning (Invention Savers JIN, Invention City, Dr. Paul) / Pororo animation, etc.

International Intellectual Property Sharing Project

We contribute to the global economy by improving the quality of life and creating jobs in the least developed and developing countries through appropriate technology and brand development and supply projects based on patent data, strengthening our position as a global leader in intellectual property rights.

Appropriate Technology Project and One Village One Brand Project based on Patent Data





INTELLECTUAL PROPERTY NO.1 PARTNER

Korea Invention
Promotion Association

KIPA : Leading the 21st Century Knowledge- Based Society

The Korea Invention Promotion Association will do its utmost to strengthen national competitiveness by boosting the value of intellectual property, training top intellectual property talents, and expanding intellectual property culture as the No. 1 partner of intellectual property.